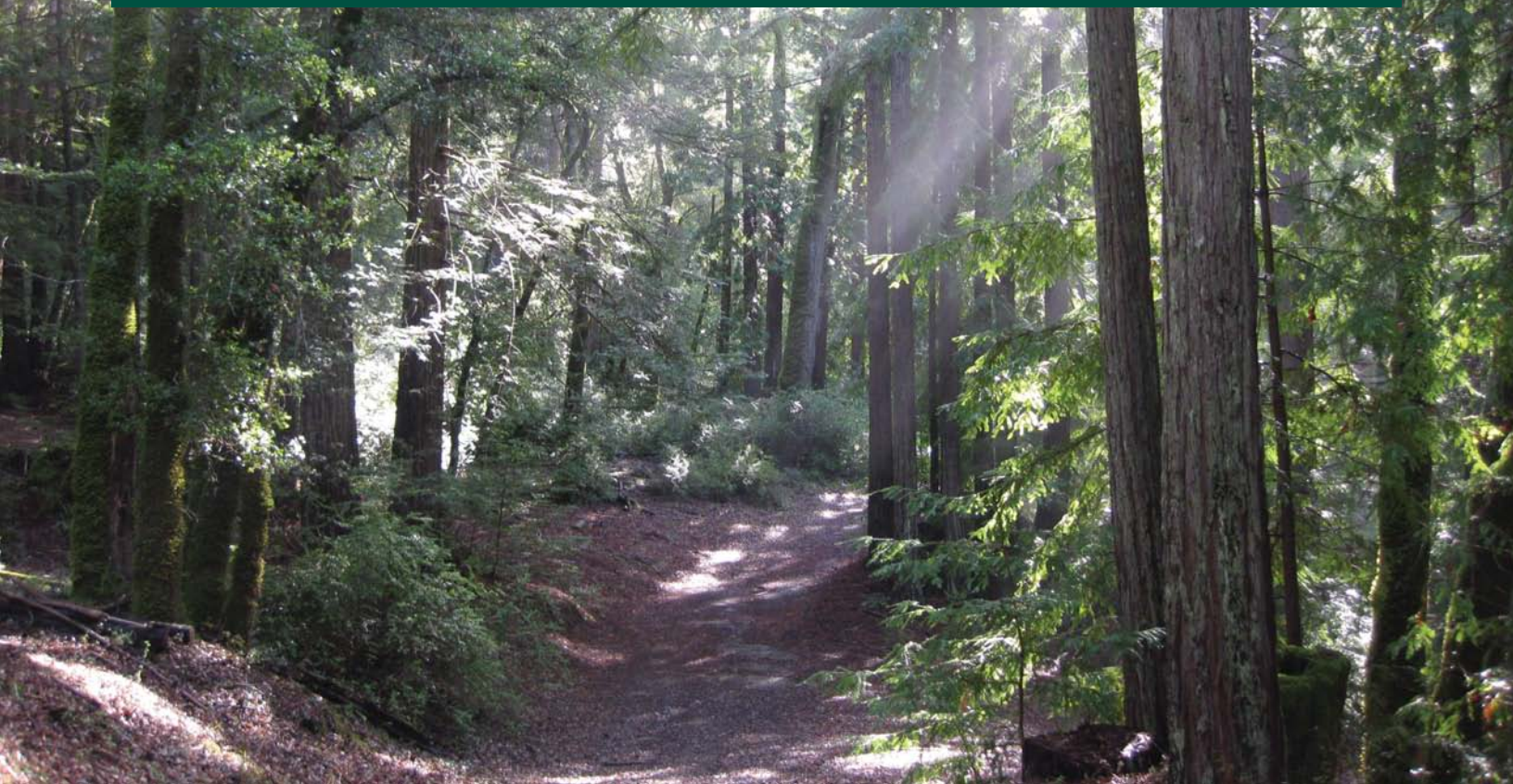


# Mountain Echo

THE NEWSLETTER OF SEMPERVIRENS FUND

SUMMER 2011



## Living Landscape Initiative

The San Francisco Bay Area's South Bay and Central Coast are characterized not only by their incredible intellectual capital and the powerful economic engine of Silicon Valley, but also by vast open spaces, broad biodiversity, productive working lands and dramatic natural beauty. But as our growth continues to explode and the effects of climate change accelerate, we risk a disappearing landscape and a lost emotional connection to nature—to a sense of place.

Individual conservation organizations like Sempervirens Fund have worked in partnership with like-minded groups and individuals to protect the area's natural resources. However, there has never been a large scale collaborative effort designed to support our local quality of life through the protection of clean air and water, local landscapes, farms and working lands, habitat, biodiversity, natural aesthetics, recreational resources and economic vibrancy...until now.

### INSIDE:

Living Landscape Initiative .....	1
Letter from the Director.....	2
Restoring the Forest .....	4
Al Lowry .....	5
Portola Valley Lecture .....	5
Founders Club.....	5
Charitable Gift Annuity .....	6
Accreditation.....	6
Tributes.....	7
Take a Hike! .....	8

CONTINUED PAGE 3



Preserving redwood forests  
since 1900

**EXECUTIVE DIRECTOR**

Reed Holderman

**DIRECTOR OF ADVANCEMENT**

Kerry A. Bresnahan, J.D.

**DIRECTOR OF FINANCE**

Barbara M. Woodbury

**BOARD OF DIRECTORS**

Dan Martin, President  
Diane Talbert, Vice President  
Richard L. Conniff, Treasurer & CFO  
Betsy Herbert, Ph.D., Secretary  
Philippe S. Cohen, Ph.D.  
Kevin Flynn  
William N. Harris  
Robert L. Katz  
Fred Keeley  
Carl King  
Regina Phelps  
Emily F. Thurber  
Stephen N. Wyckoff, J.D.

**ADVISORY BOARD**

Stanley M. Barnes  
Allan F. Brown  
Robert Buelteman  
Jeffrey E. Essner, J.D.  
Robert B. Flint, Jr.  
Walt Hays, J.D.  
Gil V. Hernandez  
Harry Hind  
Donald Kennedy, Ph.D.  
Judy Kleinberg  
David P. Lopez, Ed.D.  
Robert W. McIntyre  
Leslie Sayoko Parks  
Will Russell, Ph.D.  
Don Sherer, J.D.  
Judith Steiner  
Suneil Thomas, J.D.  
Denzil Verardo, Ph.D.  
Jennie Verardo  
Charles A. Walton  
Ellen C. Weaver, Ph.D.  
Colburn Wilbur

**SCIENCE ADVISORY PANEL**

Betsy Herbert, Ph.D., Chair  
Philippe S. Cohen, Ph.D.  
Robert Curry, Ph.D.  
Will Russell, Ph.D.  
Steve Singer, M.S.  
Jerry Smith, Ph.D.

**FOUNDING DIRECTORS**

Andrew P. Hill  
George C. Collins  
Howard J. King  
Claude A. "Tony" Look  
Dorothy Varian

LETTER FROM THE EXECUTIVE DIRECTOR

# Reaffirming Our Values

Sempervirens Fund has played a very significant role in preserving the best of the Santa Cruz Mountains for the public to use and enjoy.

Since 1900, we have saved more than 25,000 acres of redwood forest land and each day we work to protect more. Our goal is to link the seven State Parks in the region and create a Great Park that will be one of the most significant natural areas on the west coast, and perhaps in the western hemisphere.



But land conservation is not just about protecting redwood trees and natural landscapes; when we save land we reinforce our core values as a nation.

The idea of national parks and public land was invented here in the United States. When the park movement began at the turn of the 19th century, the people of our nation were beginning to feel the negative effects of urbanization and industrialization. This period in our history produced such thinkers as Thoreau and Emerson who lauded the beauty of untamed nature and its value to mankind. Public parks and wilderness areas embodied these ideas and were considered to be sacred places. They also encapsulated our nation's core values of freedom, equality, and independence, the very things that make us American.

Sempervirens Fund's founders believed that it was imperative to protect the few remaining stands of old-growth coast redwoods, which were threatened with extinction at the turn of the 19th century. They also believed that the creation of an accessible redwood park would enhance the quality of life of people living in our cities by offering a place for reflection, inspiration, and renewal. They thought that by creating a network of protected redwood forests, people living in the cities of the Bay Area would have the best of both worlds—thriving cultural centers surrounded by pristine forests and wilderness areas.

The Great Park is our lasting land legacy. It puts all the pieces together, and will sustain our connection to the natural world well into the future.

Thank you,

Reed Holderman  
Executive Director



## *Living Landscape* (continued from cover)

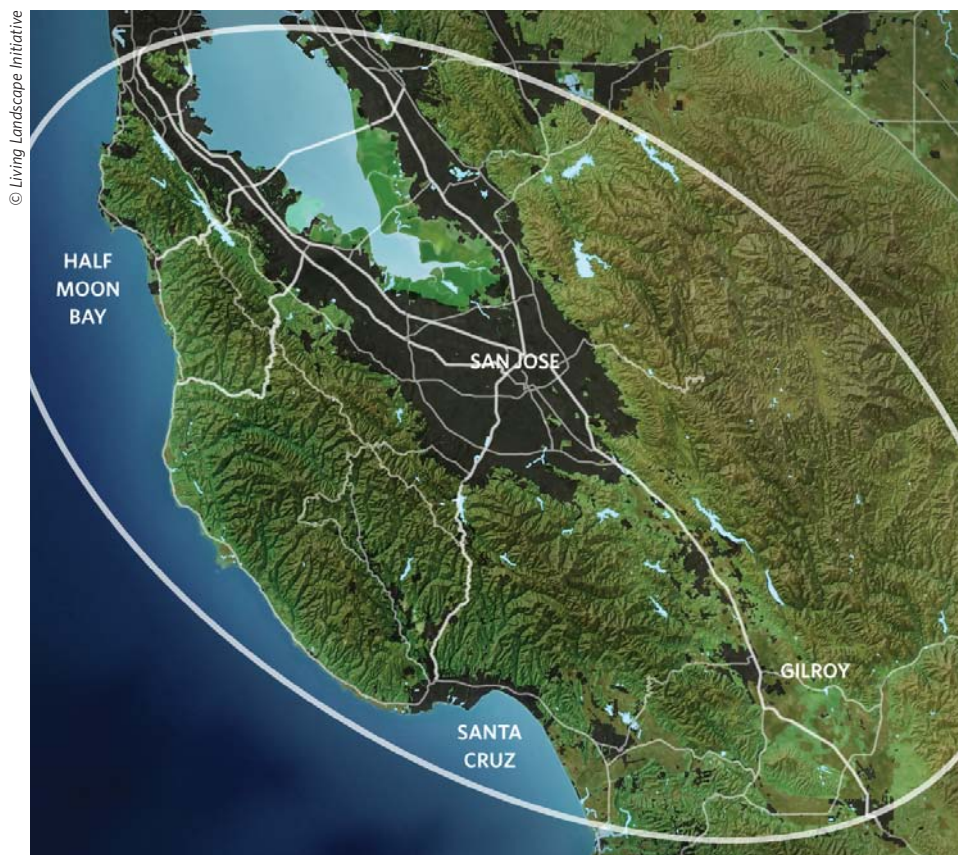
Sempervirens Fund is proud to be one of five land conservation organizations, including The Land Trust of Santa Cruz County, The Nature Conservancy, Peninsula Open Space Trust, and Save the Redwoods League, who are joining together to create a vibrant and sustainable living landscape in the heart of coastal California. This effort, the Living Landscape Initiative, seeks to protect the region's unique natural benefits and beauty, which are essential to nourishing the social and economic engine of the place we call home. Sacramento-based Resources Legacy Fund helped launch the effort using major support from the Gordon and Betty Moore Foundation and The David and Lucile Packard Foundation.

The Living Landscape Initiative's goal is to protect 80,000 acres over the next 20 years between Mount Hamilton and South San Francisco, focusing specifically on the Redwood Heartland, Coastal Lands, the Pajaro River Corridor, and Essential Linkages that create extended wildlife corridors, clean sources of water, and productive agricultural and working lands. Sempervirens Fund's Great Park Planning Area is within the Living Landscape Initiative's Redwoods Heartland focus area where we are committed, with our colleague organizations, to protect an additional 30,000 acres of redwood forests.

The Initiative is supported by a generous \$15 million 3-to-1 challenge grant from the Gordon and Betty Moore Foundation. The Moore Foundation's challenge, which must be met within the next



© Dan Quinn



© Living Landscape Initiative

three years, will help the five partner organizations raise—through their individual fund-raising efforts—an additional \$45 million to support protection and stewardship of the dramatic natural beauty that makes our region so unique.

Together with our partners we will leverage varied expertise, experience and resources to create a network of vibrant and sustainable living landscapes that support and enhance our way of life, now and for future generations.

For more information on what you can do to help, please visit [www.sempervirens.org](http://www.sempervirens.org) or [www.livinglandscapeinitiative.org](http://www.livinglandscapeinitiative.org). 🌲



# Restoring THE FOREST

Near the intersection of Highways 9 and 236, nestled between Big Basin Redwoods and Castle Rock State Parks, lies a 107-acre former working forest. In January 2010, Sempervirens Fund purchased this property from Redtree Properties, one of three major timber companies working in the Santa Cruz Mountains.

Clear-cut at the beginning of the last century and then selectively harvested through the years since then, the property now known as Sempervirens 236 is typical of harvested forest lands across the Santa Cruz Mountains. It contains a dense mix of coast redwood (*Sequoia sempervirens*) and Douglas fir trees, primarily second-growth, and a relatively small number of old-growth redwoods. It also contains other remnants of a working forest, including a dirt road and turnouts that were used by logging trucks and machinery.

Eventually, Sempervirens Fund will transfer this property to California State Parks. In the interim, we are trying to identify and implement management strategies that will help transform this 107-acre forest from commercial timberland to a forest preserve, one that will include the key habitat and aesthetic attributes of an old-growth forest.

Because the restoration of a working forest to a forest with old-growth characteristics has not yet been tried in the Santa Cruz Mountains, it may not be easy. Restoration requires a firm understanding of the forest's management history, soil types, hydrology, slope, and wildlife populations in addition to the forest's placement within the overall watershed.

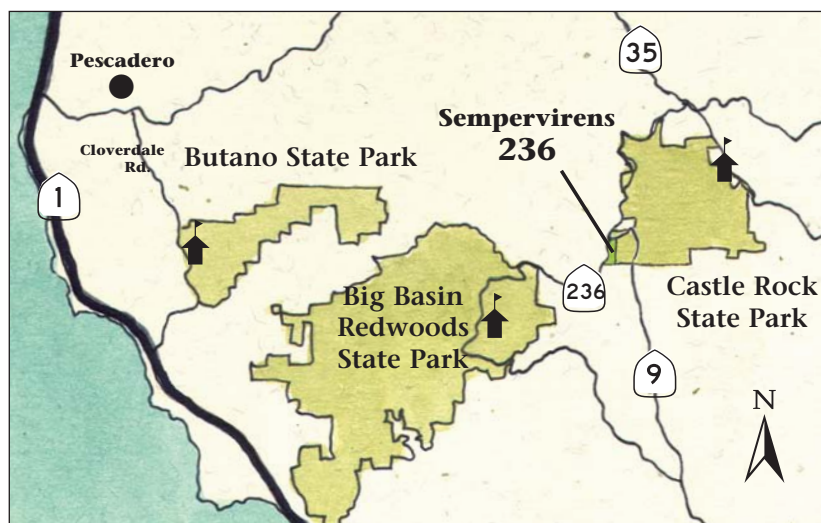


© Sempervirens Fund

Former worksite in Sempervirens 236 forest.

To help us with this research and with the creation of an appropriate and effective restoration plan for the property, we hired Environmental Services Associates (ESA), a national environmental consulting firm with expertise and extensive experience in environmental technical studies and investigations as well as land use and resource planning. The research and planning for this project is expected to last throughout 2011 with implementation of the restoration plan beginning in 2012.

This forest enhancement project—from research through implementation and beyond—will inform Sempervirens Fund's forest stewardship practices as well as those of redwood forest land managers across the Santa Cruz Mountains. According to Sempervirens Fund Board Member Dr. Philippe Cohen, who also runs Stanford's Jasper Ridge Biological Preserve, "With ESA, we hope to achieve two important goals: develop a sustainable old-growth trajectory for the second growth forest at Sempervirens 236 and provide insight into how other second growth forests can be managed so that old growth forests can continue to be an integral part of future generations." Redwood forests cover 50% of the Santa Cruz Mountain range, so careful stewardship is critical to maintaining and improving the overall health of this important ecological area. 🌲





## In Memory of Alexander Lowry (1937–2010)

Al Lowry, longtime friend and advisor to Sempervirens Fund, passed away in December 2010 after a six-month battle with cancer. Al was a photographer for the San Jose Mercury News, a teacher at the University of California at Santa Cruz, and a conservationist who used photography to share his love for the Santa Cruz mountain redwoods. His friend and Sempervirens Fund advisor, Denzil Verardo said, “In the 1970s and 80s when Sempervirens Fund’s work was focused on Big Basin and Castle Rock, Al Lowry was THE black and white photographer for the organization.” Al published five books of photography, including two books for Sempervirens Fund featuring Big Basin Redwoods and Castle Rock State Parks. We are deeply indebted to Al for sharing his view of the forest with us.

## Archaeology of the Santa Cruz Mountains

On February 15th at the Portola Valley Community Hall, we were very pleased to present *Encounters in the Redwoods*, an evening of local archaeology and history with California State Parks archaeologist Mark Hylkema. Mark spoke about the interactions between members of the Portola Expedition and the native peoples who lived in and around the Bay Area. He reminded us that, because of their intense beauty and bountiful natural resources, the Santa Cruz Mountains have attracted people for centuries. The area was already well settled when Portola arrived in 1769. In fact, even then the San Francisco Bay Area was one of the most densely populated places in North America. This is indeed a special place. 🌲

## Sempervirens Fund Honors the Founders Club

On the evening of March 3, 2011, Sempervirens Fund honored our Founders Club members (donors who gave \$500 or more last year) at our annual Founders Club Dinner. The dinner was held at the University Club of Palo Alto. Dan Martin, President of our Board of Directors, welcomed the 135 attendees to the event. Ruth Coleman, Director of California State Parks, spoke to the group about the future of the state’s park system and the importance of public/private partnerships like those between California State Parks

and Sempervirens Fund. She also thanked Sempervirens Fund for supporting Proposition 21, which was defeated last election and would have provided permanent funding for the state park system; she added that State Parks will need our support again in the future. Reed Holderman, Sempervirens Fund’s Executive Director, gave an overview of our accomplishments during the past year and set forth our plans for the future. The evening provided a wonderful mix of celebration, information, and inspiring vision. 🌲



Ruth Coleman, Director of California State Parks.



## PLANNED GIVING:

# A New Way to Support Sempervirens Fund

Donors to Sempervirens Fund can now set up charitable gift annuities that support our work and at the same time create a guaranteed income stream for themselves.

In exchange for a gift of \$10,000 or more, you can receive an annuity for your lifetime (or your lifetime plus the lifetime of another) and you will receive an upfront charitable income tax deduction. Distributions from your charitable gift annuity account can be made monthly, quarterly, biannually or annually. You can set up a charitable gift annuity at any age and can begin to receive distributions when you reach 60 years old. At your death, whatever remains in the account will be distributed to Sempervirens Fund to support our ongoing efforts to protect the coast

redwoods of the Santa Cruz Mountains.

Steve Lawton, owner of Otter B Books publishing company in Santa Cruz, is the first of our donors to take advantage of this new method of supporting Sempervirens Fund. At the age of 61, he is planning for the future and determining the best ways to distribute his assets. A long-time donor to Sempervirens Fund, Steve regularly runs on the soft (knee-friendly) trails that crisscross the redwood parks of the Santa Cruz Mountains. He gives to Sempervirens Fund because we work to protect natural areas close to home and because we are a reliable organization where he knows his gift will be put to good use. Thank you Steve!

If you would like to create a

charitable gift annuity to support Sempervirens Fund, please contact Kerry Bresnahan, Director of Advancement, at (650) 949-1453 or [kbresnahan@sempervirens.org](mailto:kbresnahan@sempervirens.org). 🌲



*Jeanie Taylor and Steve Lawton.*



*Big Basin © Sempervirens Fund*

## Sempervirens Fund: An Accredited Land Trust

Sempervirens Fund was recently awarded accreditation by the Land Trust Alliance's (LTA) Accreditation Commission. This accreditation is given to land trusts that meet national quality standards for protecting important natural places and working lands. Of 1,700 land trusts nationwide, Sempervirens Fund is one of only 130 to achieve this status, and one of only 16 in California. We are proud to be able to display the LTA Accredited Land Trust seal



indicating that our organization meets national standards for excellence, upholds the public trust, and ensures that our conservation efforts are permanent.

# Tributes

*Dedicated Redwood Trees and Legacy Grove gifts were established in honor or memory of the following people between December 21, 2010 and March 12, 2011:*

## Dedicated Redwoods

Kathryn J. Allen  
*Given by Friends & Family*

Hans Balkie  
*Given by Hans Balkie*

Liselotte Balkie  
*Given by Hans Balkie*

Col. and Mrs. John F. Batjer  
*Given by Frederick and Martha Davis*

David Beatty  
*Given by Friends & Family*

Al Bernal  
*Given by Dick and Ellie Mansfield*

Verl Clausen  
*Given by Dick and Ellie Mansfield*

Neil and Carol Delfino  
*Given by Frank Delfino*

Tom Delfino and Cynthia Dong  
*Given by Frank Delfino*

Phil Delurgio  
*Given by Maureen Nolan*

Joan Gurasich  
*Given by Joan Gurasich*

Hannelore Mishal  
*Given by Maria Paterno*

Susan Muzzy  
*Given by Gail Muzzy*

Maggie Pue  
*Given by Susan Hilger*

Herbert F. "Herb" Richards  
*Given by Gerald Cummings*

Lee Rudin and Lauren Friedman  
*Given by Lauren Friedman*

Ramona Baker Trosper  
*Given by Terry Schaeffer*

Robert E. and Anita H. Wilson  
*Given by Robert S. Wilson*

## Legacy Grove Gifts

Geoff and Patria Brown  
*Given by Geoff and Patria Brown*

Clara Cervelli  
*Given by Toni Wenks*

Terry Doherty  
*Given by Richard and Barbara Andrews*

John Ole Hagen  
*Given by Jane Hagen*

Ed Porter and Alex Alarcon  
*Given by Edward Porter*

Carmela Raiti  
*Given by Cathy Raiti*

RavenSwan and OakDan  
*Given by Gabrielle Koholeth Levine*

Marie and Grace Schut  
*Given by Anthony and Kim Hall*



© Nick Wycioff

## Give a Tree

The flowers are blooming all around us as we enter the season of celebration — graduations, Father's Day, spring and summer weddings. If you're looking for that special gift, dedicate a living redwood tree through Sempervirens Fund. Your tree or grove will be marked with a nameplate so that your loved one can visit their special place in the redwoods time and time again. Dedicate your tree using the enclosed envelope today!





NON-PROFIT ORG.  
U.S. POSTAGE  
PAID  
PERMIT NO. 90  
SANTA CLARA, CA

419 South San Antonio Road, Ste. 211  
Los Altos, CA 94022-3640

**Forwarding Service Requested**



## TAKE A HIKE!

Are these sunny spring days making you want to get outside and into nature for a while? Are your legs aching for a brisk hike to the skyline or a leisurely stroll through the forest? Check out Sempervirens Fund's website at [www.sempervirens.org](http://www.sempervirens.org) for a list of recommended trail guides and for descriptions of some of our favorite spring and summertime hikes. And to help guide you on your way, take along one of Sempervirens Fund's newly revised trail maps of the Santa Cruz Mountains. Map #1 includes hiking, biking and horseback trails within Big Basin Redwoods, Castle Rock, and Portola Redwoods State Park as well as the trails that connect these parks. Map #2 includes Año Nuevo, Big Basin Redwoods, and Butano State Parks. Each map costs \$8.00, including shipping and handling, and may be purchased by calling Sempervirens Fund at (650) 949-1453 or by sending a check to Sempervirens Fund, 419 South San Antonio Rd., Ste. 211, Los Altos, CA 94022. Please be sure to include a note with the check saying which maps you would like and how many. 🌲



© Sempervirens Fund

**Mountain Echo** is published by:

### **Sempervirens Fund**

419 South San Antonio Road, Ste. 211  
Los Altos, CA 94022-3640  
Tel: (650) 949-1453  
Fax: (650) 949-1483  
[redwoods@sempervirens.org](mailto:redwoods@sempervirens.org)  
[www.sempervirens.org](http://www.sempervirens.org)

Margie Ryan, Copywriting  
Dan DiVittorio, Design

Contact Sempervirens Fund to republish or  
reference content. ©2011 Sempervirens Fund.

### **Staff**

Reed Holderman, Executive Director  
Kerry A. Bresnahan, J.D., Director of Advancement  
Barbara M. Woodbury, Director of Finance  
Linda Yule, Forest Programs Manager  
Katie Ferrante, Annual Giving Manager  
Laura McLendon, Field Representative  
Aaron Hébert, Senior Project Associate  
Scott Nichols, Senior Development Associate  
Amanda Krauss, Receptionist/Office Assistant  
Arlene Markakis, Administrative Assistant

*Please remember to notify Sempervirens Fund when you change your address. (A note to our friends: occasionally we make our mailing list available to carefully screened organizations with goals similar to those of Sempervirens Fund. If you would prefer that your name not be shared, please contact us — we will be happy to honor your request.)*

*Sempervirens Fund is a nonprofit 501 (c)(3) organization. Donations are tax-deductible to the extent allowed by law.*